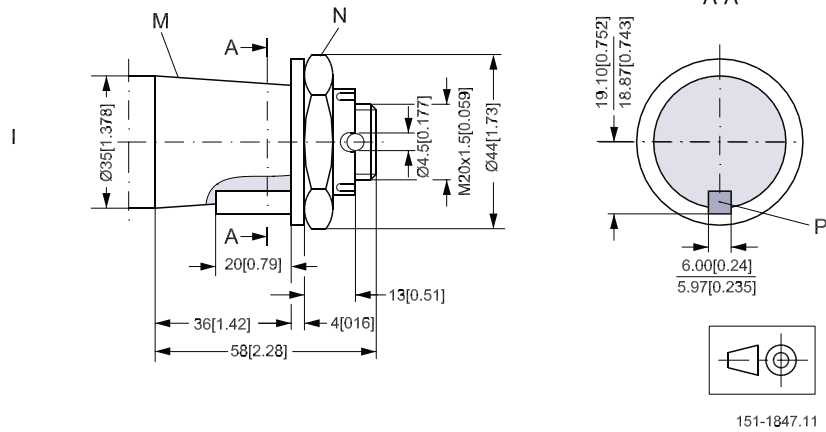


**Shaft Version**

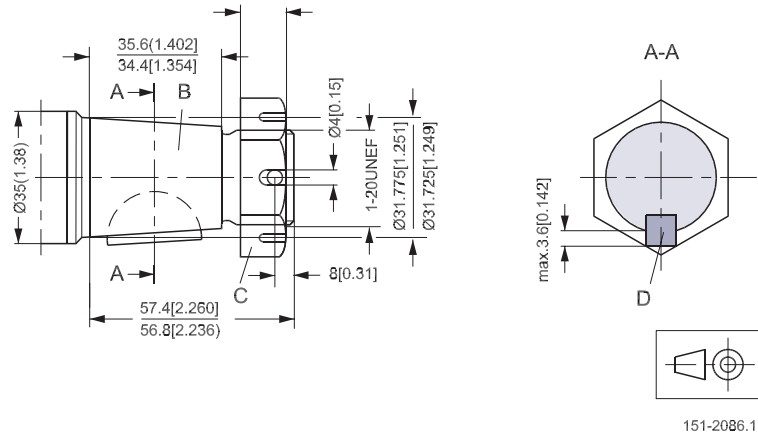
- I: Tapered shaft 35 mm
- N: DIN 937  
NV 41
- Tightening torque:  
200 ± 10 N·m [1770 ± 85 lbf·in]
- M:Taper 1:10
- P: Parallel key  
B6 • 6 • 20  
DIN 6885



151-1847.11

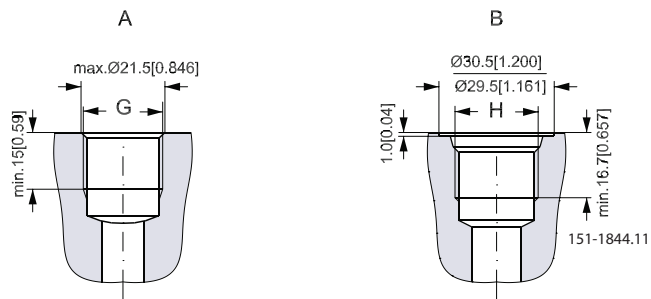
**Shaft Version**

- Tapered shaft 1 1/4 in
- B: Cone 1:8  
SAE J501
- C: 1 - 20 UNEF  
Across flats 1 7/16
- Tightening torque:  
400 ± 10 N·m [3540 ± 85 lbf·in]
- D: Woodruff key  
5/16 × 1  
SAE J502 1a



151-2086.11

**Port Thread Version**

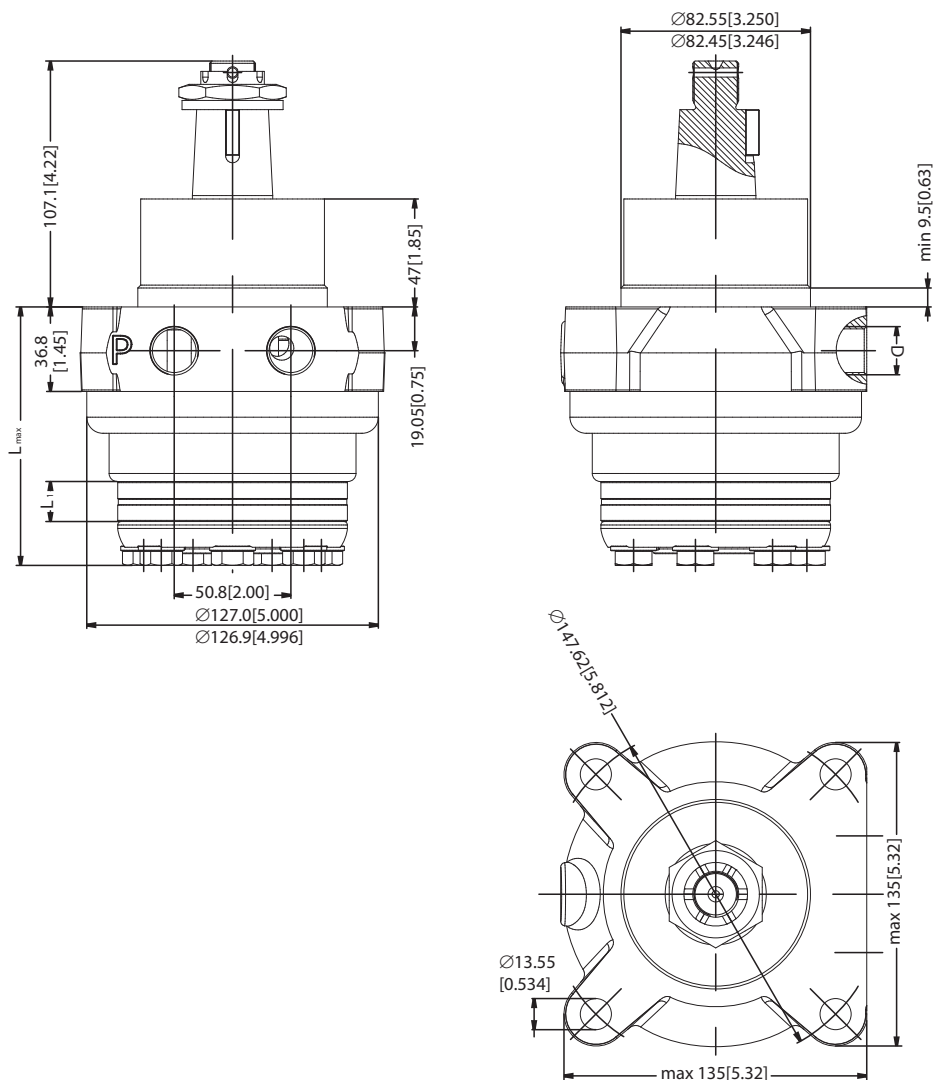


151-1844.11

A: G main ports  
G: ISO 228/1-G1/2

B: UNF main ports  
H: 7/8-14 UNF  
O-ring boss port

Dimensions

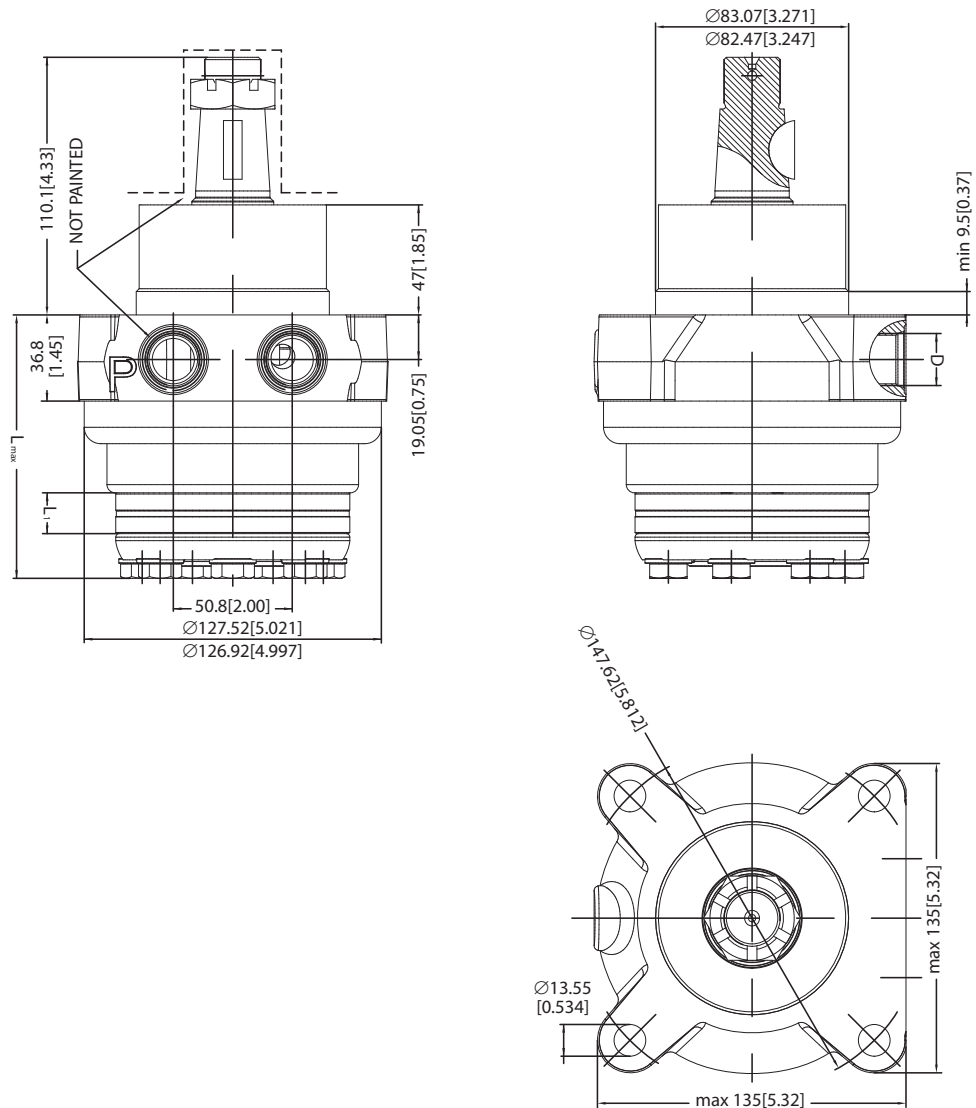


P301 103

Type	L <sub>max</sub> mm [in]	L <sub>1</sub> mm [in]	Weight kg [lb]
OMEW 100	112.0 [4.41]	14.0 [0.55]	9.3 [20.5]
OMEW 125	115.4 [4.54]	17.4 [0.69]	9.5 [20.9]
OMEW 160	119.8 [4.72]	21.8 [0.86]	9.8 [21.6]
OMEW 200	125.8 [4.95]	27.8 [1.09]	10.3 [22.7]
OMEW 250	132.8 [5.23]	34.8 [1.37]	10.8 [23.8]
OMEW 315	137.4 [5.41]	43.5 [1.71]	11.3 [24.9]

D: G 1/2, 15 mm [0.59] deep

**Dimensions**



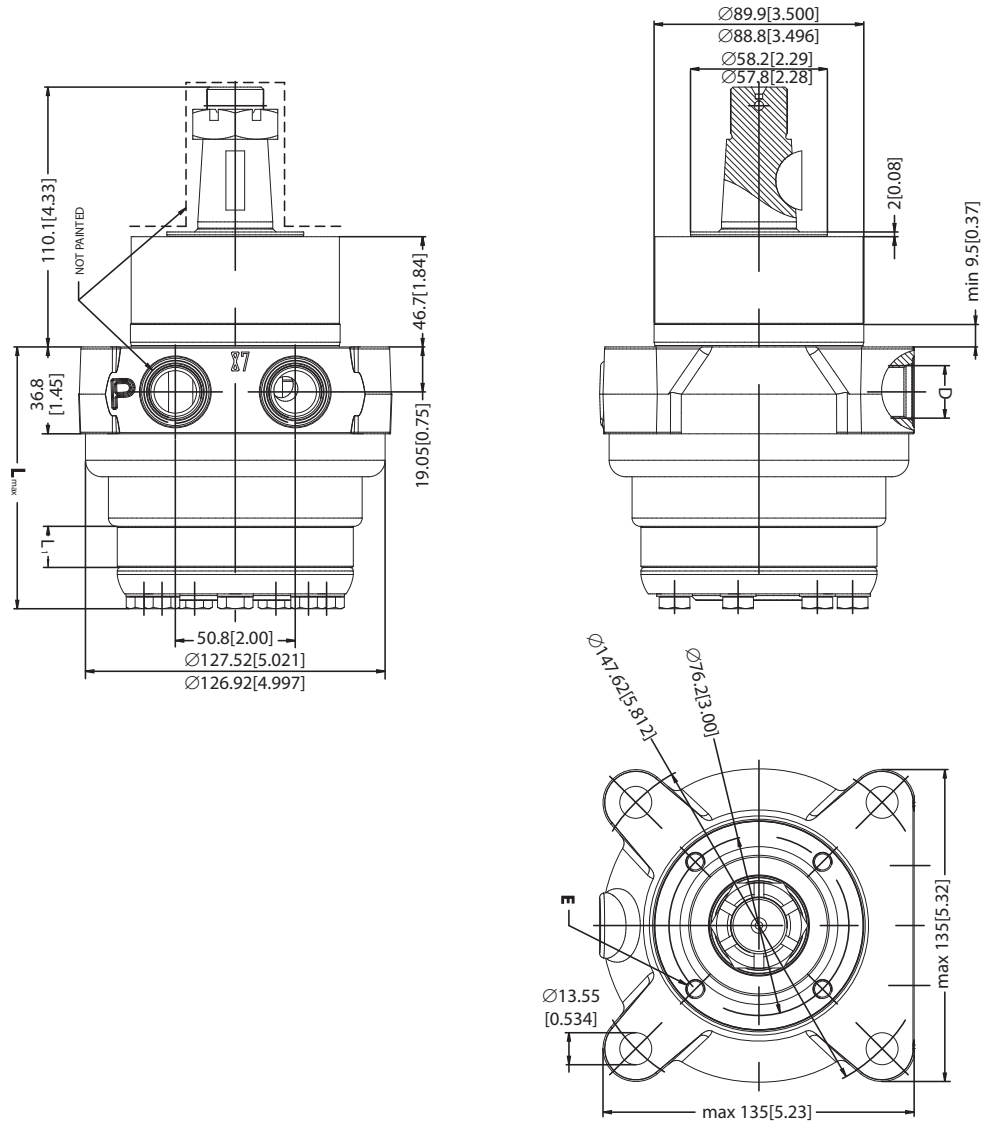
P301 101

Type	L <sub>max</sub> mm [in]	L <sub>1</sub> mm [in]	Weight kg [lb]
OMEW 100	112.0 [4.41]	14.0 [0.55]	9.3 [20.5]
OMEW 125	115.4 [4.54]	17.4 [0.69]	9.5 [20.9]
OMEW 160	119.8 [4.72]	21.8 [0.86]	9.8 [21.6]
OMEW 200	125.8 [4.95]	27.8 [1.09]	10.3 [22.7]
OMEW 250	132.8 [5.23]	34.8 [1.37]	10.8 [23.8]
OMEW 315	141.5 [5.57]	43.5 [1.71]	11.3 [24.9]
OMEW 345	145.9 [5.74]	48.0 [1.89]	11.6 [25.6]
OMEW 400	152.8 [6.02]	54.9 [2.16]	12.0 [26.5]

D: 7/8 - 14 UNF, 16.7 [0.66] deep

--- Not painted  
Please note:  
The stated dimension is with paint

Dimensions



P301 102

Type	L <sub>max</sub> mm [in]	L <sub>1</sub> mm [in]	Weight kg [lb]
OMEW 100	110.1 [4.33]	14.0 [0.55]	9.3 [20.5]
OMEW 125	113.5 [4.47]	17.4 [0.69]	9.5 [20.9]
OMEW 160	117.9 [4.64]	21.8 [0.86]	9.8 [21.6]
OMEW 200	123.9 [4.88]	27.8 [1.09]	10.3 [22.7]
OMEW 250	130.9 [5.15]	34.8 [1.37]	10.8 [23.8]
OMEW 315	139.6 [5.50]	43.5 [1.71]	11.3 [24.9]
OMEW 345	144.0 [5.67]	47.9 [1.89]	11.6 [25.6]
OMEW 400	150.9 [5.94]	54.8 [2.16]	12.0 [26.5]

D: 7/8 - 14 UNF, 16.7 [0.66] deep

E: Thread for external brake  
 4 x 5/16-18 UNC, min 20 [0.79] deep

--- Not painted

Please note:

The stated dimension is with paint